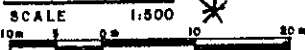


STRATA PLAN OF LOT 113  
SECTION 20, BLOCK 5 NORTH,  
RANGE 1 WEST, PLAN 66002  
NEW WESTMINSTER DISTRICT.

STRATA PLAN N.W. 2209

Deposited and registered in the Land  
Title Office at New Westminster, B.C.  
Dated this 20 day of Nov. 1984

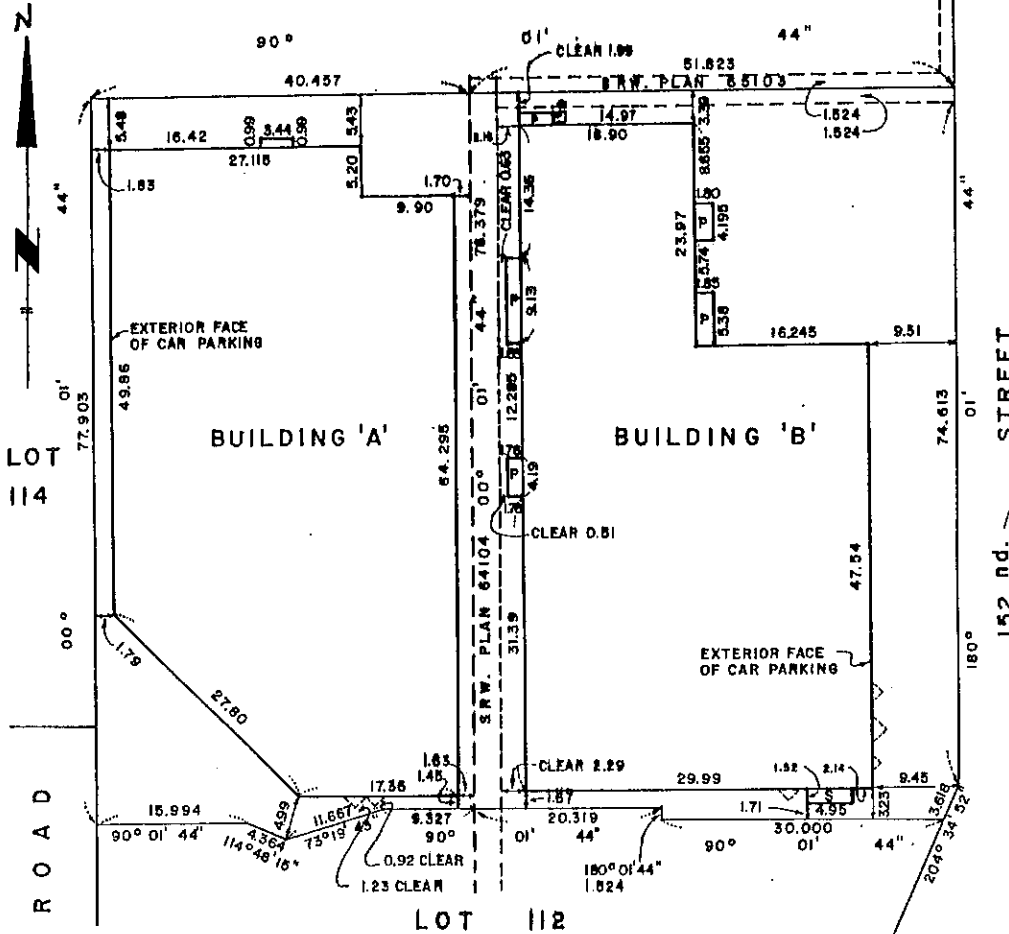
KEY PLAN



E.J. Raven *[Signature]*  
Registrar

- THIS PLAN LIES WITHIN GREATER VANCOUVER  
REGIONAL DISTRICT,  
MUNICIPALITY OF SURREY.

LOT 114



NOTES:

- All angles are 90° or 45° unless otherwise noted.
- All distances are in meters unless otherwise noted.

LEGEND:

Bearings are astronomic and are derived from Plan 66002.

- SL. DENOTES STRATA LOT.
- L.C.P. DENOTES LIMITED COMMON PROPERTY.
- C DENOTES CORRIDOR.
- ⊙ DENOTES COMMON PROPERTY.
- L DENOTES LOBBY.
- ER DENOTES ELECTRICAL ROOM.
- MR DENOTES MECHANICAL ROOM.
- EM DENOTES ELEVATOR MACHINE ROOM.
- E DENOTES ELEVATOR.
- GR DENOTES GARBAGE ROOM.
- PA DENOTES CAR PARKING AREA.
- P DENOTES PATIO.
- B DENOTES BALCONY.
- S DENOTES STAIRS.
- JR DENOTES JANITOR ROOM.
- V DENOTES VENT.
- LR DENOTES LAUNDRY ROOM.
- MI DENOTES SQUARE METRES.
- ST DENOTES STORAGE.
- LR. DENOTES LAUNDRY ROOM.
- PB. DENOTES PARKING BAY.

MORGAN STEWART AND COMPANY  
Surveyors and Engineers  
780 Denison St., Vancouver, B.C.

THE ADDRESS FOR SERVICE OF DOCUMENTS ON THE STRATA CORPORATION IS:

THE OWNERS OF STRATA PLAN N.W. 2209  
C/O 8781 CEDARBRIDGE WAY  
RICHMOND, B.C.  
V6X 2M7

NAME OF DEVELOPMENT:

LINCOLN 5 HILL

CIVIC ADDRESSES:

- BUILDING 'A' - 10680 - 151A STREET.
- BUILDING 'B' - 10662 - 151A STREET.  
SURREY, B.C.

I, BRIAN W. COLLINS, of Vancouver, British Columbia Land Surveyor, hereby certify that the building erected on the parcel described above is wholly within the external boundaries of the parcel.

Dated this 10 day of OCTOBER 1984.

*Brian W. Collins* B.C.L.S.

RECEIVED  
JUL 04 1990

REMARK GROUP

STRATA PLAN W2209

CONDOMINIUM ACT

Lot No.	Sheet No.	FORM 1	FORM 2	FORM 3
		SCHEDULE OF UNIT ENTITLEMENT	SCHEDULE OF INTEREST UPON DESTRUCTION	SCHEDULE OF VOTING RIGHTS
		UNIT ENTITLEMENT	INTEREST	NUMBER OF VOTES
1	10	849	78	
2	10	841	78	
3	10	872	78	
4	10	841	78	
5	10	880	78	
6	10	849	78	
7	10	841	78	
8	10	841	78	
9	10	880	77	
10	10	833	78	
11	10	841	78	
12	10	841	78	
13	10	887	83	
14	11	882	78	
15	11	844	78	
16	11	880	78	
17	11	844	78	
18	11	913	77	
19	11	853	78	
20	11	844	78	
21	11	844	78	
22	11	886	77	
23	11	839	78	
24	11	824	78	
25	11	844	78	
26	11	838	78	
27	12	882	78	
28	12	844	78	
29	12	880	78	
30	12	844	78	
31	12	932	77	
32	12	853	78	
33	12	844	78	
34	12	844	78	
35	12	886	77	
36	12	839	78	
37	12	844	78	
38	12	844	78	
39	12	838	78	
40	13	882	78	
41	13	844	78	
42	13	844	78	
43	13	932	77	
44	13	853	78	
45	13	844	78	

MORGAN STEWART AND COMPANY  
 Surveyors and Engineers  
 780 Denison St., Vancouver, B.C.

DATE OCTOBER 10 1984 B.C.L.

STRATA PLAN NW 2209

## CONDOMINIUM ACT

Lot No.	Sheet No.	FORM 1	FORM 2	FORM 3
		SCHEDULE OF UNIT ENTITLEMENT	SCHEDULE OF INTEREST UPON DESTRUCTION	SCHEDULE OF VOTING RIGHTS
		UNIT ENTITLEMENT	INTEREST	NUMBER OF VOTES
46	13	844	75	
47	13	986	77	
48	13	844	75	
49	13	844	75	
50	13	838	75	
51	15	849	75	
52	15	841	75	
53	15	785	76	
54	15	815	76	
55	15	841	75	
56	15	841	75	
57	15	898	75	
58	15	847	75	
59	15	841	75	
60	15	837	75	
61	15	881	76	
62	15	841	75	
63	15	841	75	
64	15	850	83	
65	16	853	75	
66	16	844	75	
67	16	867	76	
68	16	821	75	
69	16	844	75	
70	16	822	75	
71	16	900	77	
72	16	850	75	
73	16	844	75	
74	16	840	75	
75	16	890	76	
76	16	844	75	
77	16	844	75	
78	16	850	75	
79	17	853	75	
80	17	844	75	
81	17	867	76	
82	17	821	75	
83	17	844	75	
84	17	844	75	
85	17	900	77	
86	17	850	75	
87	17	844	75	
88	17	840	75	
89	17	844	76	
90	17	844	75	

MORGAN STEWART AND COMPANY  
Surveyors and Engineers  
760 Denison St., Vancouver, B.C.

DATE 2010.10.10 BY BCL/S

FILE: 3558-01/

STRATA PLAN NW2209

CONDOMINIUM ACT

Lot No.	Sheet No	FORM 1	FORM 2	FORM 3
		SCHEDULE OF UNIT ENTITLEMENT	SCHEDULE OF INTEREST UPON DESTRUCTION	SCHEDULE OF VOTING RIGHTS
		UNIT ENTITLEMENT	INTEREST	NUMBER OF VOTES
91	17	880	78	
92	18	883	78	
93	18	844	76	
94	18	1043	77	
95	18	844	78	
96	18	880	78	
97	18	844	78	
98	18	840	78	
99	18	844	76	
100	18	880	78	
AGGREGATE		85,328	7,812	

I/ We the undersigned do solemnly declare that  
 1) I/ We the undersigned am/are the owner-developer, or (in the alternative) the duly authorized agent of the owner-developer.  
 2) The strata plan is entirely for residential use. I/ We make this solemn declaration conscientiously believing it to be true, and knowing that it is of the same force and effect as if made under oath.

**OWNER:**  
 ROSEWARNE HOLDINGS LTD.  
 (Incorporation No. 167711)  
  
 Authorized Signatory

Authorized Signatory

DECLARED before me this 11 day of October 1984.

**LYNN RAMSAY**  
 A Commissioner for taking Affidavits  
 for British Columbia

Accepted as to forms 1, 2 and 3.  
 Dated this 16<sup>th</sup> day of NOVEMBER, 1984.

Jean M. Siedman  
 Superintendent of Insurance.

**MORTGAGEE:**  
 THE BANK OF NOVA SCOTIA  
 THE ONLY APPOINTED ATTORNEY  
  
 IN THE PRESENCE OF  
D.R. Waggett  
 650 WEST GEORGIA ST.  
 VANCOUVER, B.C.  
 SECRETARY

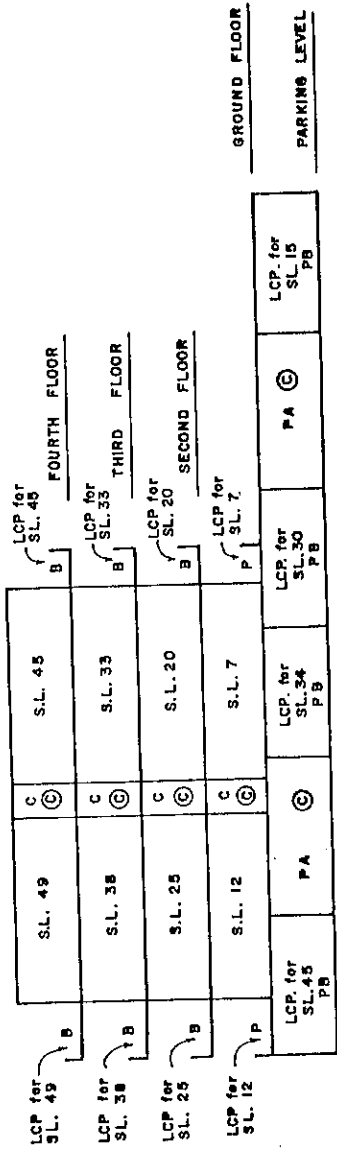
I, Brian W. Collins, British Columbia land surveyor hereby certify that the building shown in this strata plan has not as of the 16<sup>th</sup> day of NOVEMBER, 1984 been previously occupied.  
 Dated at Vancouver, British Columbia this 16<sup>th</sup> day of NOVEMBER, 1984.

Brian W. Collins B.C.L.S.

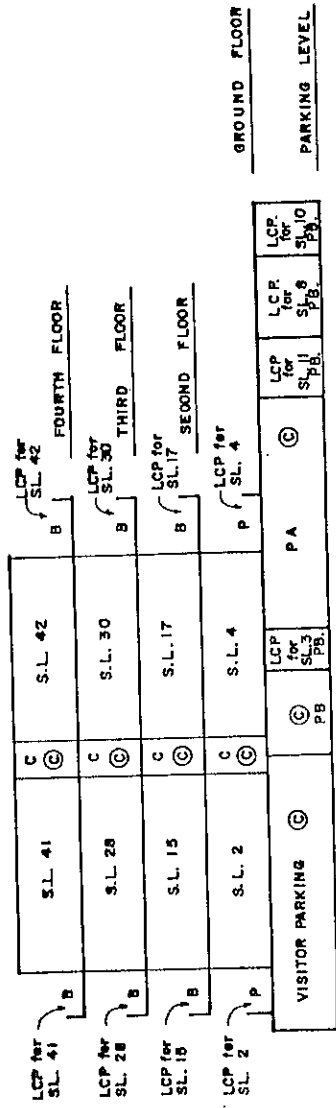
DATE OCTOBER 16<sup>th</sup> 1984 AW B.C.L.S.

**SECTIONS - BUILDING 'A'**  
SCALE 1:200

STRATA PLAN 100 2209



**SECTION A-A**



**SECTION B-B**

SECTIONS - BUILDING 'A'

SCALE 1:200

STRATA PLAN NW 2209

FOURTH FLOOR		S.L. 48		S.L. 49		S.L. 50		S.L. 46		S.L. 47		S.L. 48		S.L. 49		S.L. 50	
THIRD FLOOR		S.L. 37		S.L. 38		S.L. 39		S.L. 40		S.L. 41		S.L. 42		S.L. 43		S.L. 44	
SECOND FLOOR		S.L. 24		S.L. 25		S.L. 26		S.L. 27		S.L. 28		S.L. 29		S.L. 30		S.L. 31	
GROUND FLOOR		S.L. 11		S.L. 12		S.L. 13		S.L. 14		S.L. 15		S.L. 16		S.L. 17		S.L. 18	
PARKING LEVEL		S.L. 10		S.L. 11		S.L. 12		S.L. 13		S.L. 14		S.L. 15		S.L. 16		S.L. 17	

SECTION C-C

FOURTH FLOOR		S.L. 49		S.L. 50		S.L. 47		S.L. 48		S.L. 49		S.L. 50	
THIRD FLOOR		S.L. 38		S.L. 39		S.L. 40		S.L. 41		S.L. 42		S.L. 43	
SECOND FLOOR		S.L. 25		S.L. 26		S.L. 27		S.L. 28		S.L. 29		S.L. 30	
GROUND FLOOR		S.L. 12		S.L. 13		S.L. 14		S.L. 15		S.L. 16		S.L. 17	
PARKING LEVEL		S.L. 11		S.L. 12		S.L. 13		S.L. 14		S.L. 15		S.L. 16	

SECTION D-D

10/1/84

MORGAN STEWART AND COMPANY  
Surveyors and Engineers  
760 Denman St, Vancouver, B.C.

DATE OCTOBER 10, 1984 NW 2209 B.C.L.S.

**SECTIONS - BUILDING 'B'**

**STRATA PLAN** NW 2209



LCP for SL. 95 B	SL. 93	C	SL. 93	LCP for SL. 93 B	FOURTH FLOOR
LCP for SL. 84 B	SL. 80	C	SL. 80	LCP for SL. 80 B	THIRD FLOOR
LCP for SL. 70 B	SL. 66	C	SL. 66	LCP for SL. 66 B	SECOND FLOOR
LCP for SL. 56 P	SL. 52	C	SL. 52	LCP for SL. 52 P	GROUND FLOOR
LCP for SL. 82 PB		PA	SL. 76	LCP for SL. 76 PB	PARKING LEVEL

**SECTION A-A**

LCP for SL. 96 B	SL. 96	LCP for SL. 96 B	SL. 94	LCP for SL. 94 B
LCP for SL. 86 B	SL. 86	LCP for SL. 86 B	SL. 83	LCP for SL. 83 B
LCP for SL. 72 B	SL. 72	LCP for SL. 72 B	SL. 69	LCP for SL. 69 B
LCP for SL. 58 P	SL. 58	LCP for SL. 58 P	SL. 55	LCP for SL. 55 P
LCP for SL. 97 PB	SL. 97	LCP for SL. 97 PB	SL. 95	LCP for SL. 95 PB
LCP for SL. 98 PB	SL. 98	LCP for SL. 98 PB	SL. 84	LCP for SL. 84 PB
LCP for SL. 99 PB	SL. 99	LCP for SL. 99 PB	SL. 70	LCP for SL. 70 PB
LCP for SL. 98 PB	SL. 98	LCP for SL. 98 PB	SL. 56	LCP for SL. 56 PB
LCP for SL. 100 PB	SL. 100	LCP for SL. 100 PB	SL. 85	LCP for SL. 85 PB
LCP for SL. 96 PB	SL. 96	LCP for SL. 96 PB	SL. 71	LCP for SL. 71 PB
LCP for SL. 97 PB	SL. 97	LCP for SL. 97 PB	SL. 57	LCP for SL. 57 PB
LCP for SL. 99 PB	SL. 99	LCP for SL. 99 PB	SL. 81	LCP for SL. 81 PB
LCP for SL. 98 PB	SL. 98	LCP for SL. 98 PB	SL. 75	LCP for SL. 75 PB
LCP for SL. 97 PB	SL. 97	LCP for SL. 97 PB	SL. 68	LCP for SL. 68 PB
LCP for SL. 96 PB	SL. 96	LCP for SL. 96 PB	SL. 53	LCP for SL. 53 PB
LCP for SL. 95 PB	SL. 95	LCP for SL. 95 PB	SL. 54	LCP for SL. 54 PB
LCP for SL. 94 PB	SL. 94	LCP for SL. 94 PB	SL. 81	LCP for SL. 81 PB
LCP for SL. 93 PB	SL. 93	LCP for SL. 93 PB	SL. 82	LCP for SL. 82 PB
LCP for SL. 92 PB	SL. 92	LCP for SL. 92 PB	SL. 81	LCP for SL. 81 PB
LCP for SL. 91 PB	SL. 91	LCP for SL. 91 PB	SL. 82	LCP for SL. 82 PB
LCP for SL. 90 PB	SL. 90	LCP for SL. 90 PB	SL. 81	LCP for SL. 81 PB
LCP for SL. 89 PB	SL. 89	LCP for SL. 89 PB	SL. 82	LCP for SL. 82 PB
LCP for SL. 88 PB	SL. 88	LCP for SL. 88 PB	SL. 81	LCP for SL. 81 PB
LCP for SL. 87 PB	SL. 87	LCP for SL. 87 PB	SL. 82	LCP for SL. 82 PB
LCP for SL. 86 PB	SL. 86	LCP for SL. 86 PB	SL. 81	LCP for SL. 81 PB
LCP for SL. 85 PB	SL. 85	LCP for SL. 85 PB	SL. 82	LCP for SL. 82 PB
LCP for SL. 84 PB	SL. 84	LCP for SL. 84 PB	SL. 81	LCP for SL. 81 PB
LCP for SL. 83 PB	SL. 83	LCP for SL. 83 PB	SL. 82	LCP for SL. 82 PB
LCP for SL. 82 PB	SL. 82	LCP for SL. 82 PB	SL. 81	LCP for SL. 81 PB
LCP for SL. 81 PB	SL. 81	LCP for SL. 81 PB	SL. 82	LCP for SL. 82 PB
LCP for SL. 80 PB	SL. 80	LCP for SL. 80 PB	SL. 81	LCP for SL. 81 PB
LCP for SL. 79 PB	SL. 79	LCP for SL. 79 PB	SL. 82	LCP for SL. 82 PB
LCP for SL. 78 PB	SL. 78	LCP for SL. 78 PB	SL. 81	LCP for SL. 81 PB
LCP for SL. 77 PB	SL. 77	LCP for SL. 77 PB	SL. 82	LCP for SL. 82 PB
LCP for SL. 76 PB	SL. 76	LCP for SL. 76 PB	SL. 81	LCP for SL. 81 PB
LCP for SL. 75 PB	SL. 75	LCP for SL. 75 PB	SL. 82	LCP for SL. 82 PB
LCP for SL. 74 PB	SL. 74	LCP for SL. 74 PB	SL. 81	LCP for SL. 81 PB
LCP for SL. 73 PB	SL. 73	LCP for SL. 73 PB	SL. 82	LCP for SL. 82 PB
LCP for SL. 72 PB	SL. 72	LCP for SL. 72 PB	SL. 81	LCP for SL. 81 PB
LCP for SL. 71 PB	SL. 71	LCP for SL. 71 PB	SL. 82	LCP for SL. 82 PB
LCP for SL. 70 PB	SL. 70	LCP for SL. 70 PB	SL. 81	LCP for SL. 81 PB
LCP for SL. 69 PB	SL. 69	LCP for SL. 69 PB	SL. 82	LCP for SL. 82 PB
LCP for SL. 68 PB	SL. 68	LCP for SL. 68 PB	SL. 81	LCP for SL. 81 PB
LCP for SL. 67 PB	SL. 67	LCP for SL. 67 PB	SL. 82	LCP for SL. 82 PB
LCP for SL. 66 PB	SL. 66	LCP for SL. 66 PB	SL. 81	LCP for SL. 81 PB
LCP for SL. 65 PB	SL. 65	LCP for SL. 65 PB	SL. 82	LCP for SL. 82 PB
LCP for SL. 64 PB	SL. 64	LCP for SL. 64 PB	SL. 81	LCP for SL. 81 PB
LCP for SL. 63 PB	SL. 63	LCP for SL. 63 PB	SL. 82	LCP for SL. 82 PB
LCP for SL. 62 PB	SL. 62	LCP for SL. 62 PB	SL. 81	LCP for SL. 81 PB
LCP for SL. 61 PB	SL. 61	LCP for SL. 61 PB	SL. 82	LCP for SL. 82 PB
LCP for SL. 60 PB	SL. 60	LCP for SL. 60 PB	SL. 81	LCP for SL. 81 PB
LCP for SL. 59 PB	SL. 59	LCP for SL. 59 PB	SL. 82	LCP for SL. 82 PB
LCP for SL. 58 PB	SL. 58	LCP for SL. 58 PB	SL. 81	LCP for SL. 81 PB
LCP for SL. 57 PB	SL. 57	LCP for SL. 57 PB	SL. 82	LCP for SL. 82 PB
LCP for SL. 56 PB	SL. 56	LCP for SL. 56 PB	SL. 81	LCP for SL. 81 PB
LCP for SL. 55 PB	SL. 55	LCP for SL. 55 PB	SL. 82	LCP for SL. 82 PB
LCP for SL. 54 PB	SL. 54	LCP for SL. 54 PB	SL. 81	LCP for SL. 81 PB
LCP for SL. 53 PB	SL. 53	LCP for SL. 53 PB	SL. 82	LCP for SL. 82 PB
LCP for SL. 52 PB	SL. 52	LCP for SL. 52 PB	SL. 81	LCP for SL. 81 PB
LCP for SL. 51 PB	SL. 51	LCP for SL. 51 PB	SL. 82	LCP for SL. 82 PB
LCP for SL. 50 PB	SL. 50	LCP for SL. 50 PB	SL. 81	LCP for SL. 81 PB
LCP for SL. 49 PB	SL. 49	LCP for SL. 49 PB	SL. 82	LCP for SL. 82 PB
LCP for SL. 48 PB	SL. 48	LCP for SL. 48 PB	SL. 81	LCP for SL. 81 PB
LCP for SL. 47 PB	SL. 47	LCP for SL. 47 PB	SL. 82	LCP for SL. 82 PB
LCP for SL. 46 PB	SL. 46	LCP for SL. 46 PB	SL. 81	LCP for SL. 81 PB
LCP for SL. 45 PB	SL. 45	LCP for SL. 45 PB	SL. 82	LCP for SL. 82 PB
LCP for SL. 44 PB	SL. 44	LCP for SL. 44 PB	SL. 81	LCP for SL. 81 PB
LCP for SL. 43 PB	SL. 43	LCP for SL. 43 PB	SL. 82	LCP for SL. 82 PB
LCP for SL. 42 PB	SL. 42	LCP for SL. 42 PB	SL. 81	LCP for SL. 81 PB
LCP for SL. 41 PB	SL. 41	LCP for SL. 41 PB	SL. 82	LCP for SL. 82 PB
LCP for SL. 40 PB	SL. 40	LCP for SL. 40 PB	SL. 81	LCP for SL. 81 PB
LCP for SL. 39 PB	SL. 39	LCP for SL. 39 PB	SL. 82	LCP for SL. 82 PB
LCP for SL. 38 PB	SL. 38	LCP for SL. 38 PB	SL. 81	LCP for SL. 81 PB
LCP for SL. 37 PB	SL. 37	LCP for SL. 37 PB	SL. 82	LCP for SL. 82 PB
LCP for SL. 36 PB	SL. 36	LCP for SL. 36 PB	SL. 81	LCP for SL. 81 PB
LCP for SL. 35 PB	SL. 35	LCP for SL. 35 PB	SL. 82	LCP for SL. 82 PB
LCP for SL. 34 PB	SL. 34	LCP for SL. 34 PB	SL. 81	LCP for SL. 81 PB
LCP for SL. 33 PB	SL. 33	LCP for SL. 33 PB	SL. 82	LCP for SL. 82 PB
LCP for SL. 32 PB	SL. 32	LCP for SL. 32 PB	SL. 81	LCP for SL. 81 PB
LCP for SL. 31 PB	SL. 31	LCP for SL. 31 PB	SL. 82	LCP for SL. 82 PB
LCP for SL. 30 PB	SL. 30	LCP for SL. 30 PB	SL. 81	LCP for SL. 81 PB
LCP for SL. 29 PB	SL. 29	LCP for SL. 29 PB	SL. 82	LCP for SL. 82 PB
LCP for SL. 28 PB	SL. 28	LCP for SL. 28 PB	SL. 81	LCP for SL. 81 PB
LCP for SL. 27 PB	SL. 27	LCP for SL. 27 PB	SL. 82	LCP for SL. 82 PB
LCP for SL. 26 PB	SL. 26	LCP for SL. 26 PB	SL. 81	LCP for SL. 81 PB
LCP for SL. 25 PB	SL. 25	LCP for SL. 25 PB	SL. 82	LCP for SL. 82 PB
LCP for SL. 24 PB	SL. 24	LCP for SL. 24 PB	SL. 81	LCP for SL. 81 PB
LCP for SL. 23 PB	SL. 23	LCP for SL. 23 PB	SL. 82	LCP for SL. 82 PB
LCP for SL. 22 PB	SL. 22	LCP for SL. 22 PB	SL. 81	LCP for SL. 81 PB
LCP for SL. 21 PB	SL. 21	LCP for SL. 21 PB	SL. 82	LCP for SL. 82 PB
LCP for SL. 20 PB	SL. 20	LCP for SL. 20 PB	SL. 81	LCP for SL. 81 PB
LCP for SL. 19 PB	SL. 19	LCP for SL. 19 PB	SL. 82	LCP for SL. 82 PB
LCP for SL. 18 PB	SL. 18	LCP for SL. 18 PB	SL. 81	LCP for SL. 81 PB
LCP for SL. 17 PB	SL. 17	LCP for SL. 17 PB	SL. 82	LCP for SL. 82 PB
LCP for SL. 16 PB	SL. 16	LCP for SL. 16 PB	SL. 81	LCP for SL. 81 PB
LCP for SL. 15 PB	SL. 15	LCP for SL. 15 PB	SL. 82	LCP for SL. 82 PB
LCP for SL. 14 PB	SL. 14	LCP for SL. 14 PB	SL. 81	LCP for SL. 81 PB
LCP for SL. 13 PB	SL. 13	LCP for SL. 13 PB	SL. 82	LCP for SL. 82 PB
LCP for SL. 12 PB	SL. 12	LCP for SL. 12 PB	SL. 81	LCP for SL. 81 PB
LCP for SL. 11 PB	SL. 11	LCP for SL. 11 PB	SL. 82	LCP for SL. 82 PB
LCP for SL. 10 PB	SL. 10	LCP for SL. 10 PB	SL. 81	LCP for SL. 81 PB
LCP for SL. 9 PB	SL. 9	LCP for SL. 9 PB	SL. 82	LCP for SL. 82 PB
LCP for SL. 8 PB	SL. 8	LCP for SL. 8 PB	SL. 81	LCP for SL. 81 PB
LCP for SL. 7 PB	SL. 7	LCP for SL. 7 PB	SL. 82	LCP for SL. 82 PB
LCP for SL. 6 PB	SL. 6	LCP for SL. 6 PB	SL. 81	LCP for SL. 81 PB
LCP for SL. 5 PB	SL. 5	LCP for SL. 5 PB	SL. 82	LCP for SL. 82 PB
LCP for SL. 4 PB	SL. 4	LCP for SL. 4 PB	SL. 81	LCP for SL. 81 PB
LCP for SL. 3 PB	SL. 3	LCP for SL. 3 PB	SL. 82	LCP for SL. 82 PB
LCP for SL. 2 PB	SL. 2	LCP for SL. 2 PB	SL. 81	LCP for SL. 81 PB
LCP for SL. 1 PB	SL. 1	LCP for SL. 1 PB	SL. 82	LCP for SL. 82 PB
LCP for SL. 0 PB	SL. 0	LCP for SL. 0 PB	SL. 81	LCP for SL. 81 PB

**SECTION C-C**

DATE OCTOBER 10 1984 B.C.L.S.

MORGAN STEWART AND COMPANY  
Surveyors and Engineers  
760 Denman St, Vancouver, B.C.

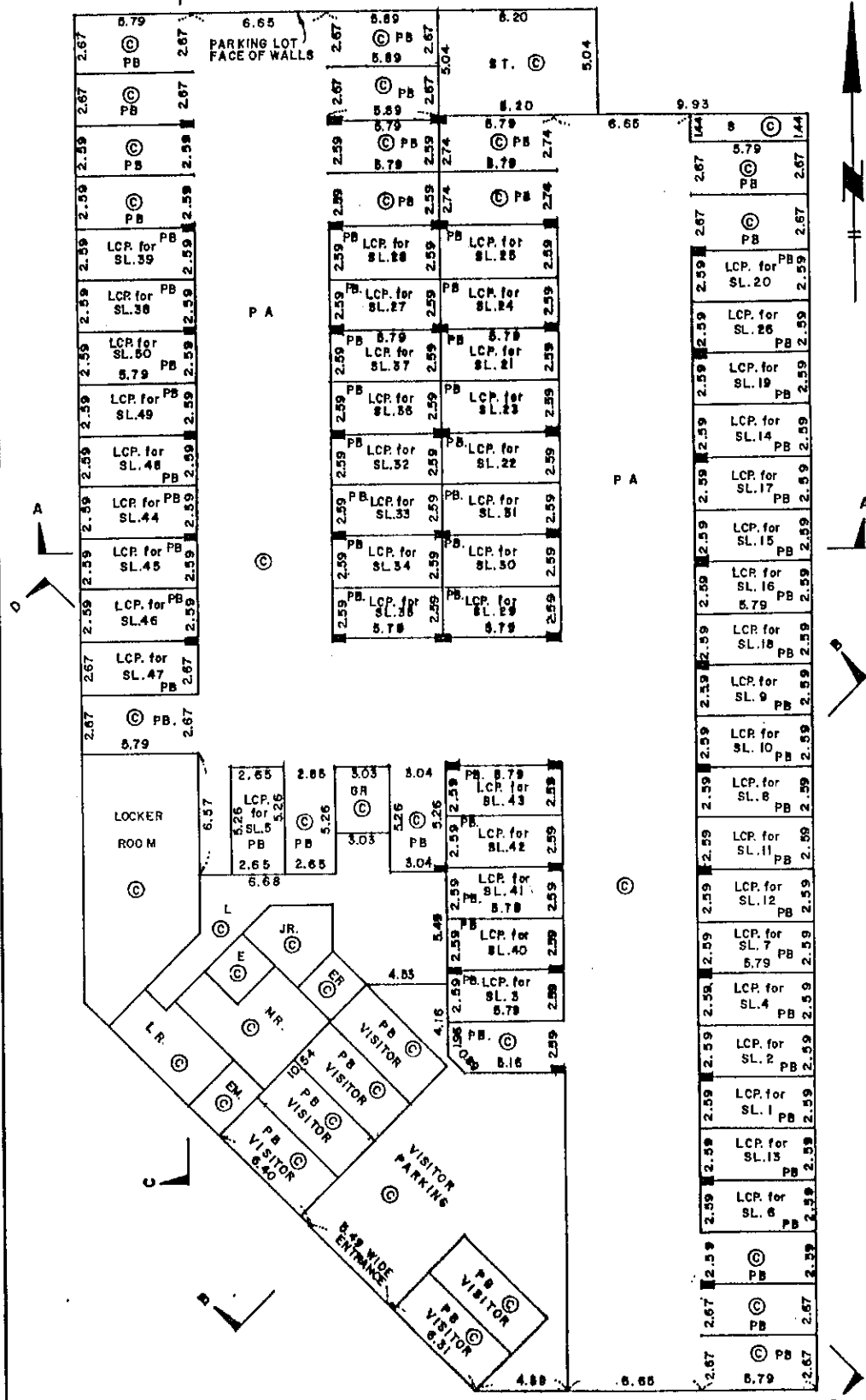




# PARKING LEVEL - BUILDING 'A'

SCALE 1:200

STRATA PLAN NW 2209



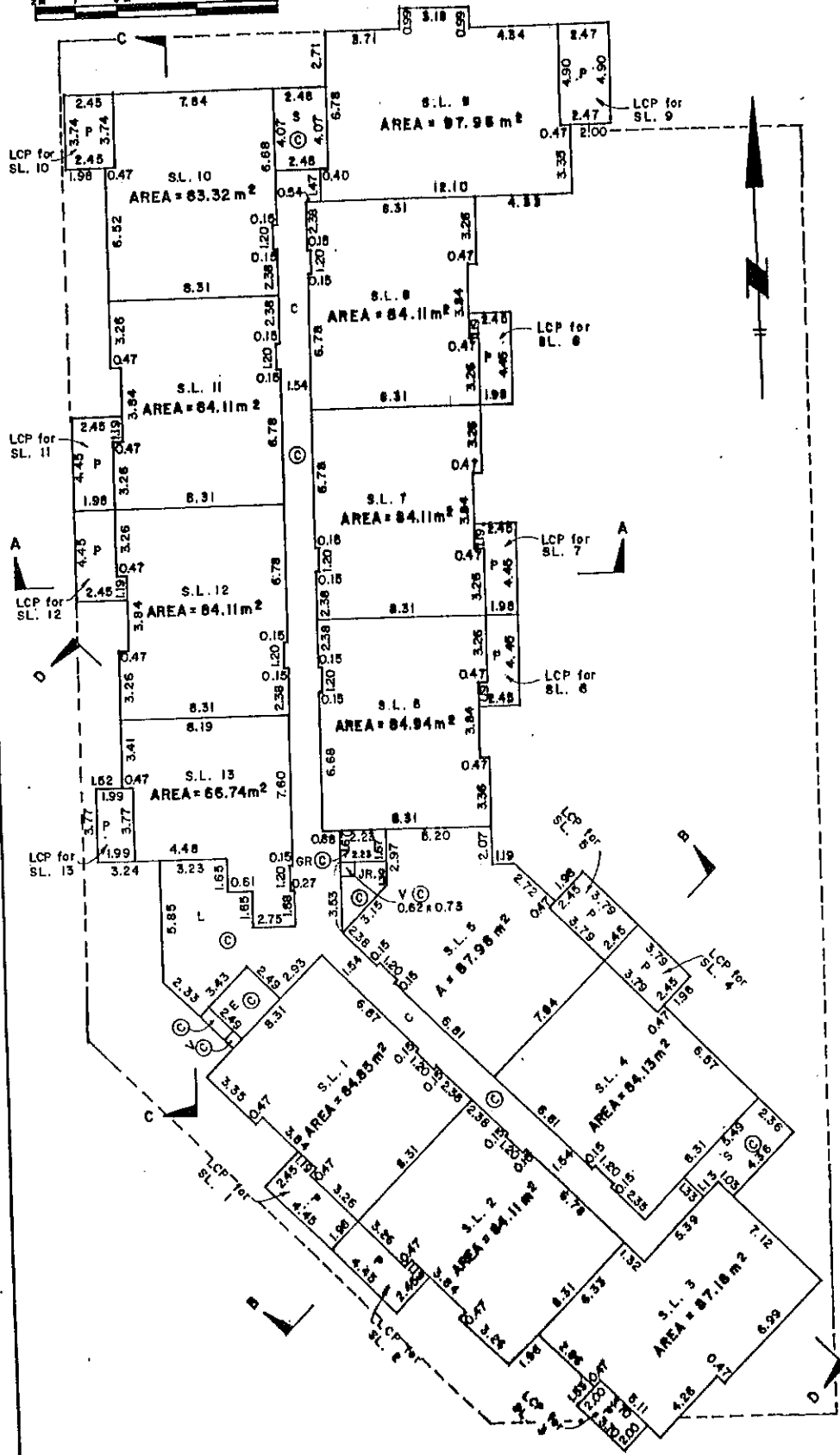
MORGAN STEWART AND COMPANY  
 Surveyors and Engineers  
 760 Denman St, Vancouver, B.C.

DATE October 10, 1984 BY B.C.L.

# GROUND FLOOR - BUILDING 'A'

STRATA PLAN NW 2209

SCALE 1:200  
0m 5m 10m



MORGAN STEWART AND COMPANY  
 Surveyors and Engineers  
 760 Denman St, Vancouver, B.C.

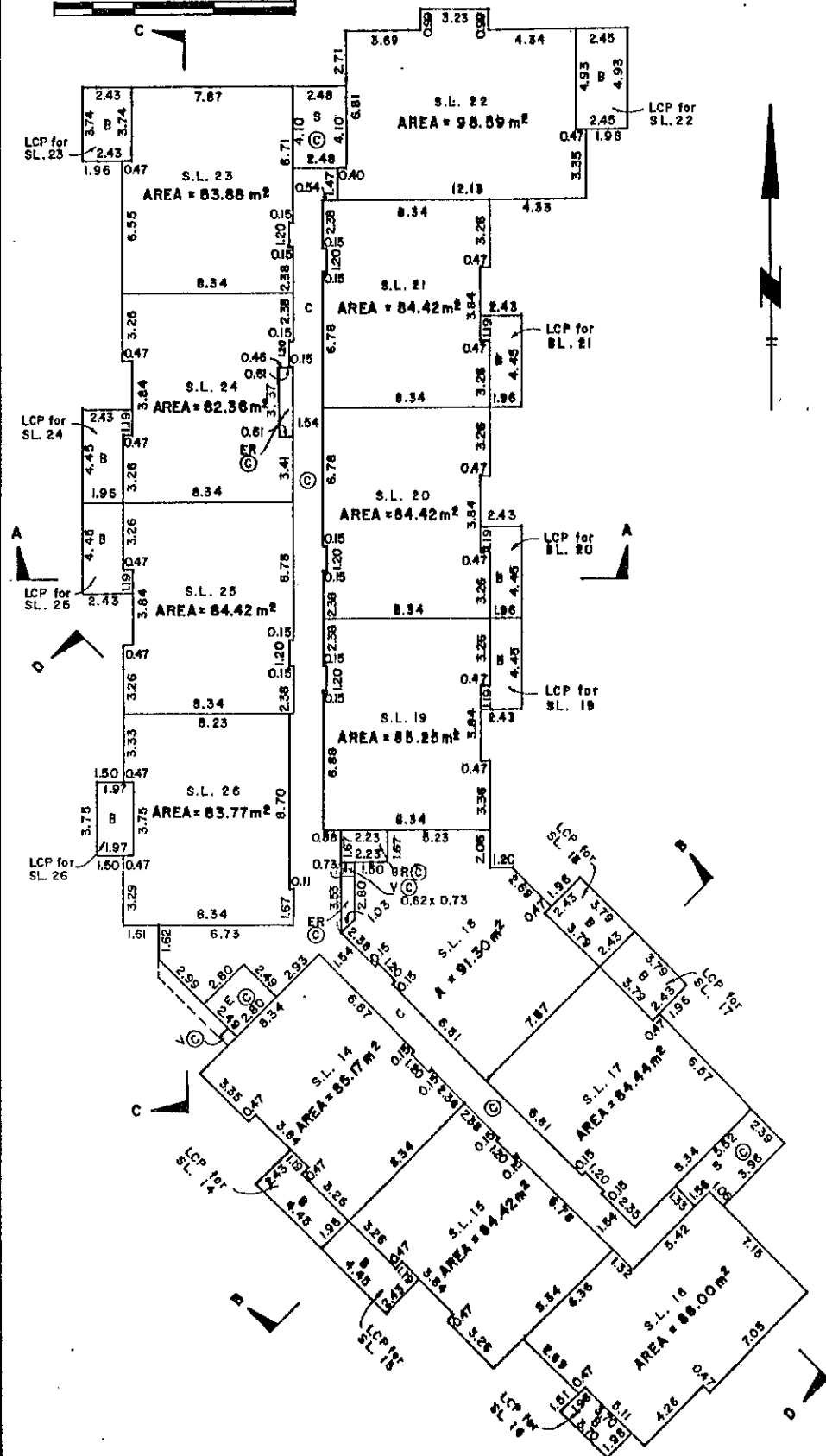
DATE 05-10-1984 B.C.L.S.

FILE: 3558-01

# SECOND FLOOR - BUILDING 'A'

STRATA PLAN NW 2209

SCALE 1:200



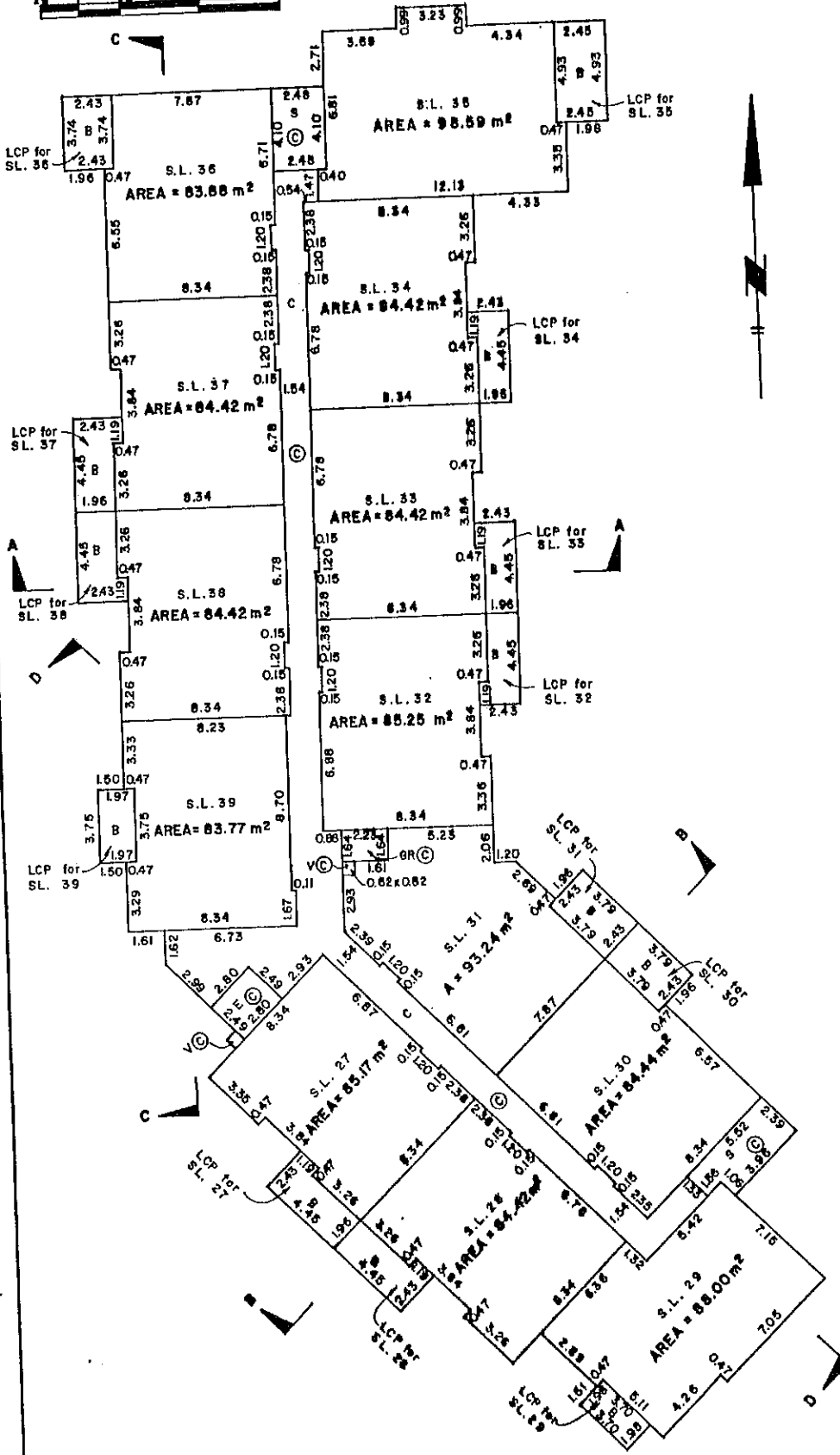
MORGAN STEWART AND COMPANY  
 Surveyors and Engineers  
 760 Denman St, Vancouver, B.C.

DATE OCTOBER 10 1984 BY S.C.L.

# THIRD FLOOR - BUILDING 'A'

STRATA PLAN NW 2209

SCALE 1:200



MORGAN STEWART AND COMPANY  
 Surveyors and Engineers  
 780 Denman St, Vancouver, B.C.

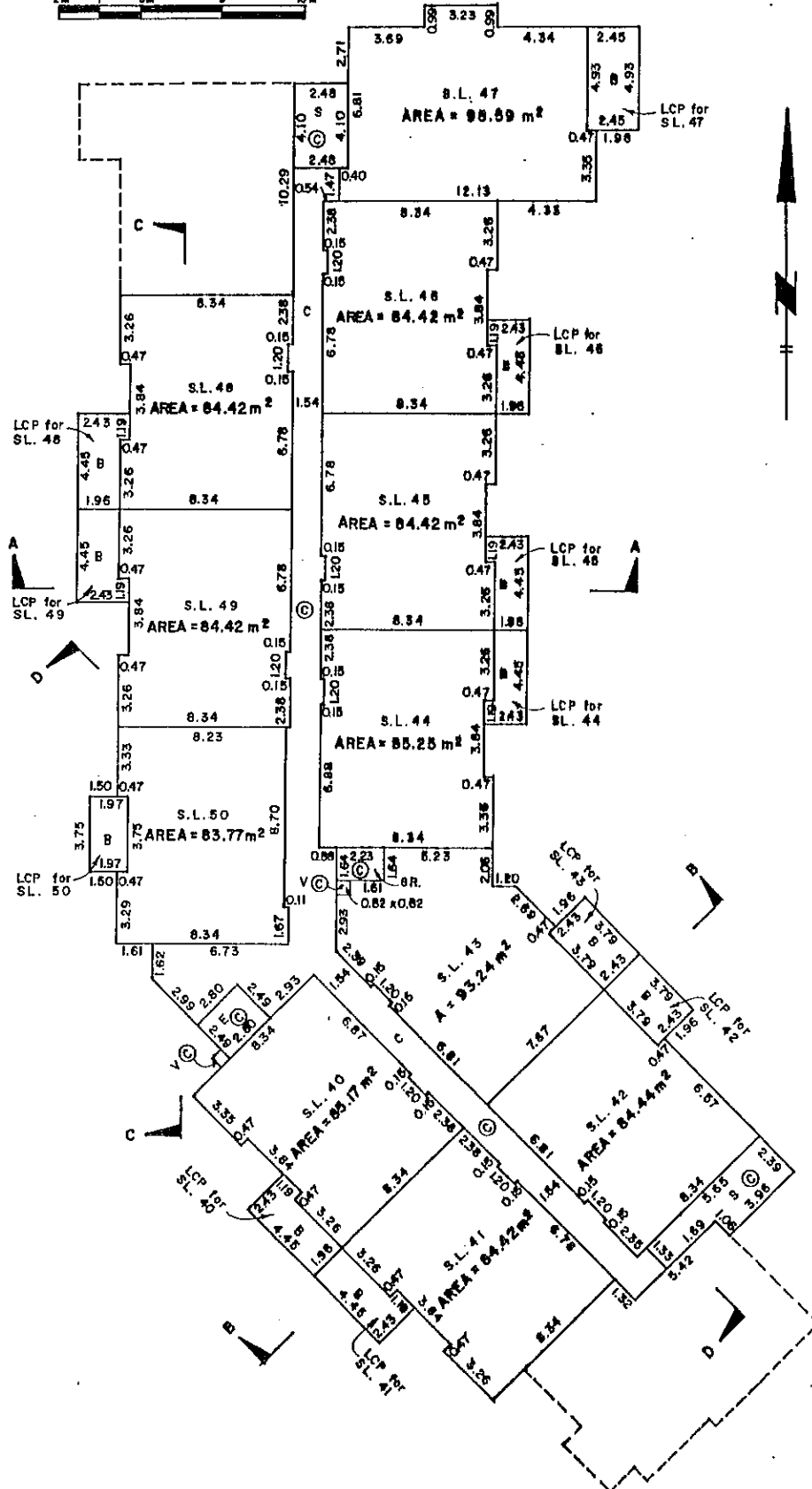
DATE OCTOBER 10 1984 BJC B.C.

FILE: 3658-C

# FOURTH FLOOR - BUILDING 'A'

STRATA PLAN NW 2209

SCALE 1:200  
0m 5m 10m

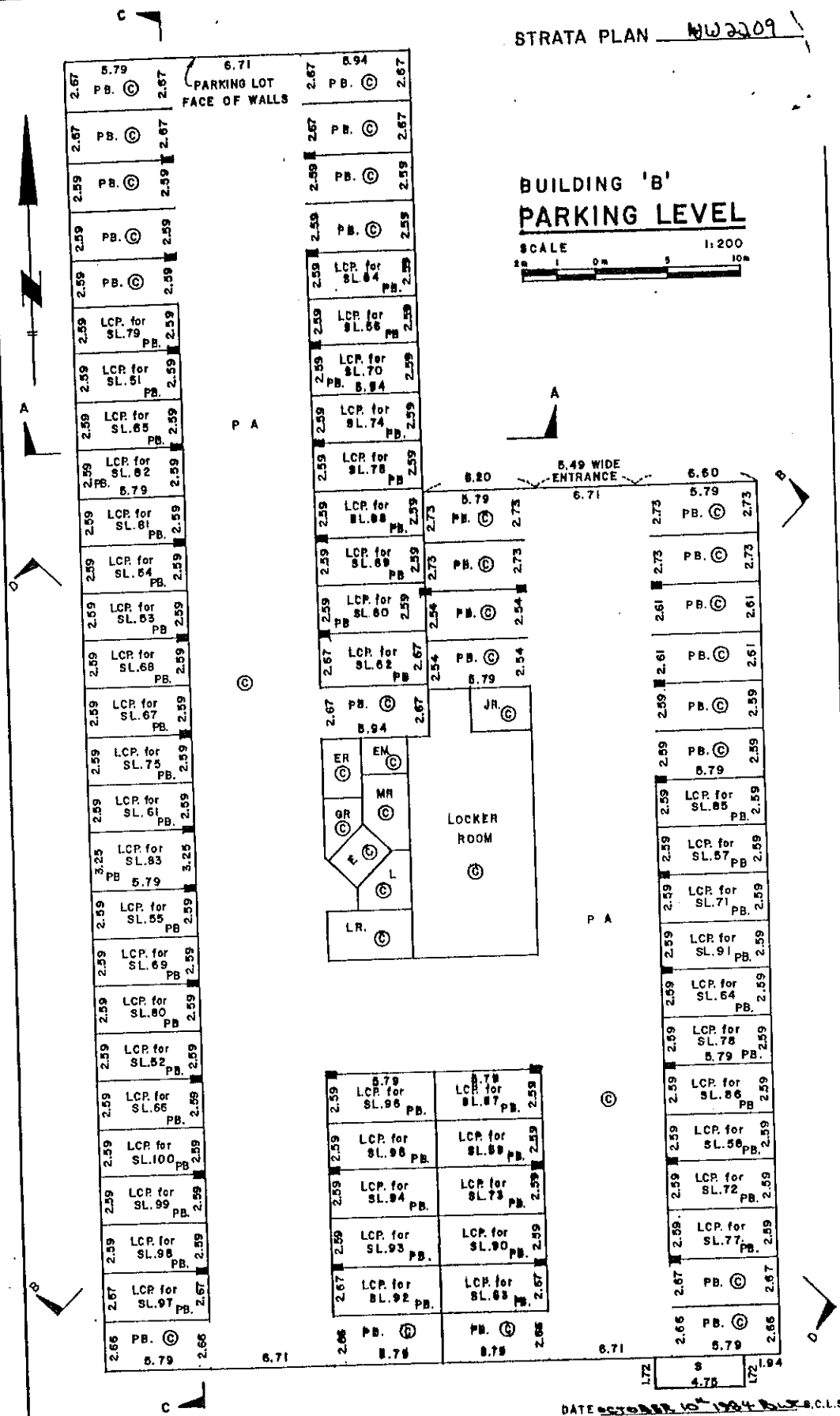


MORGAN STEWART AND COMPANY  
 Surveyors and Engineers  
 760 Denman St, Vancouver, B.C.

DATE OCTOBER 10<sup>th</sup> 1984 RWC D.C.L.S.

STRATA PLAN MW2209

**BUILDING 'B'**  
**PARKING LEVEL**

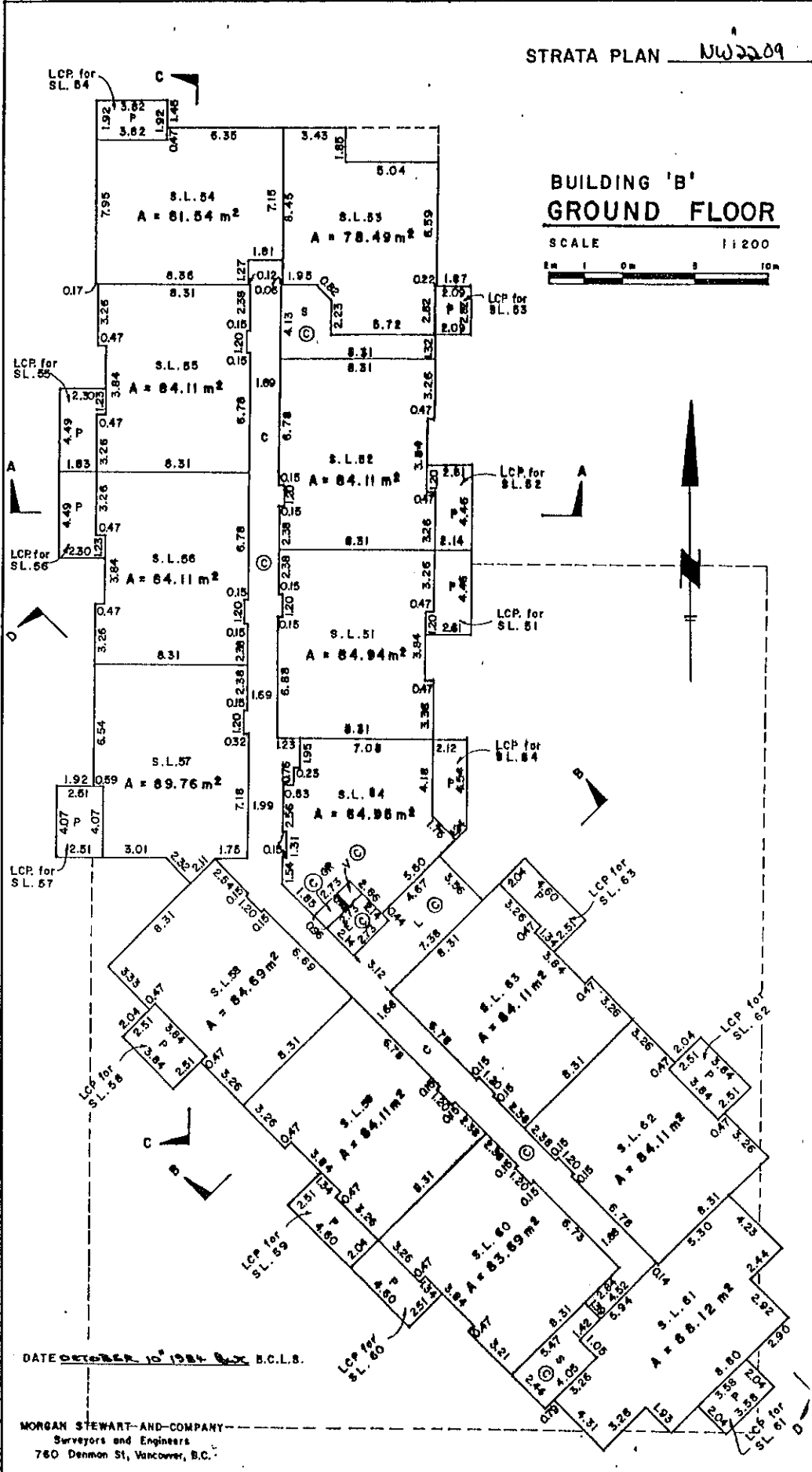


MORGAN STEWART AND COMPANY  
Surveyors and Engineers  
760 Denman St, Vancouver, B.C.

DATE 2004-10-14 BY [Signature] S.C.L.S.

STRATA PLAN NW2209

**BUILDING 'B'**  
**GROUND FLOOR**

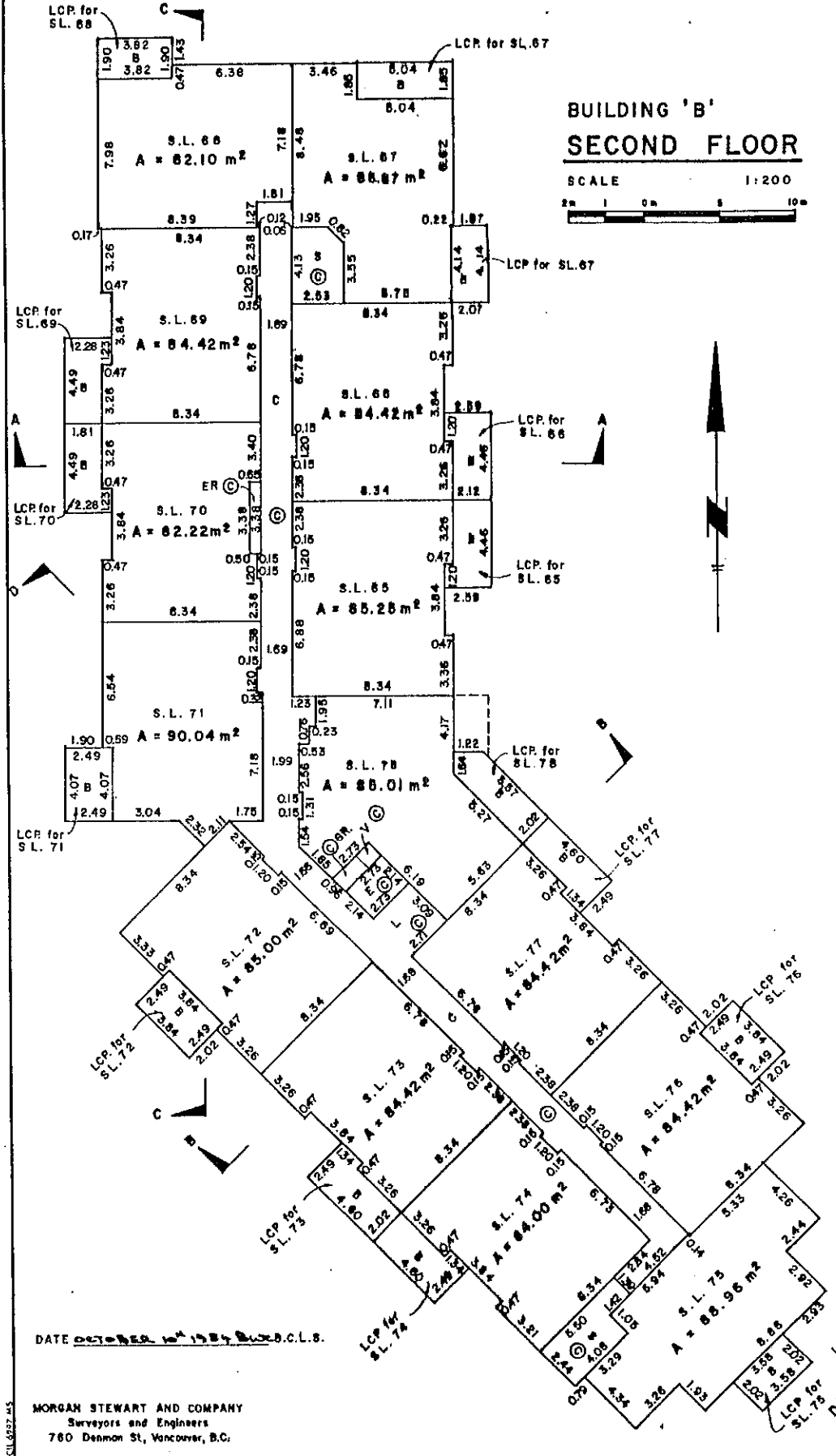


DATE October 10 1984 B.C.L.S.

MORGAN STEWART AND COMPANY  
Surveyors and Engineers  
760 Denison St, Vancouver, B.C.

STRATA PLAN NW2209

**BUILDING 'B'**  
**SECOND FLOOR**



DATE 04-07-1984 W.A. & J.C. C.L.S.

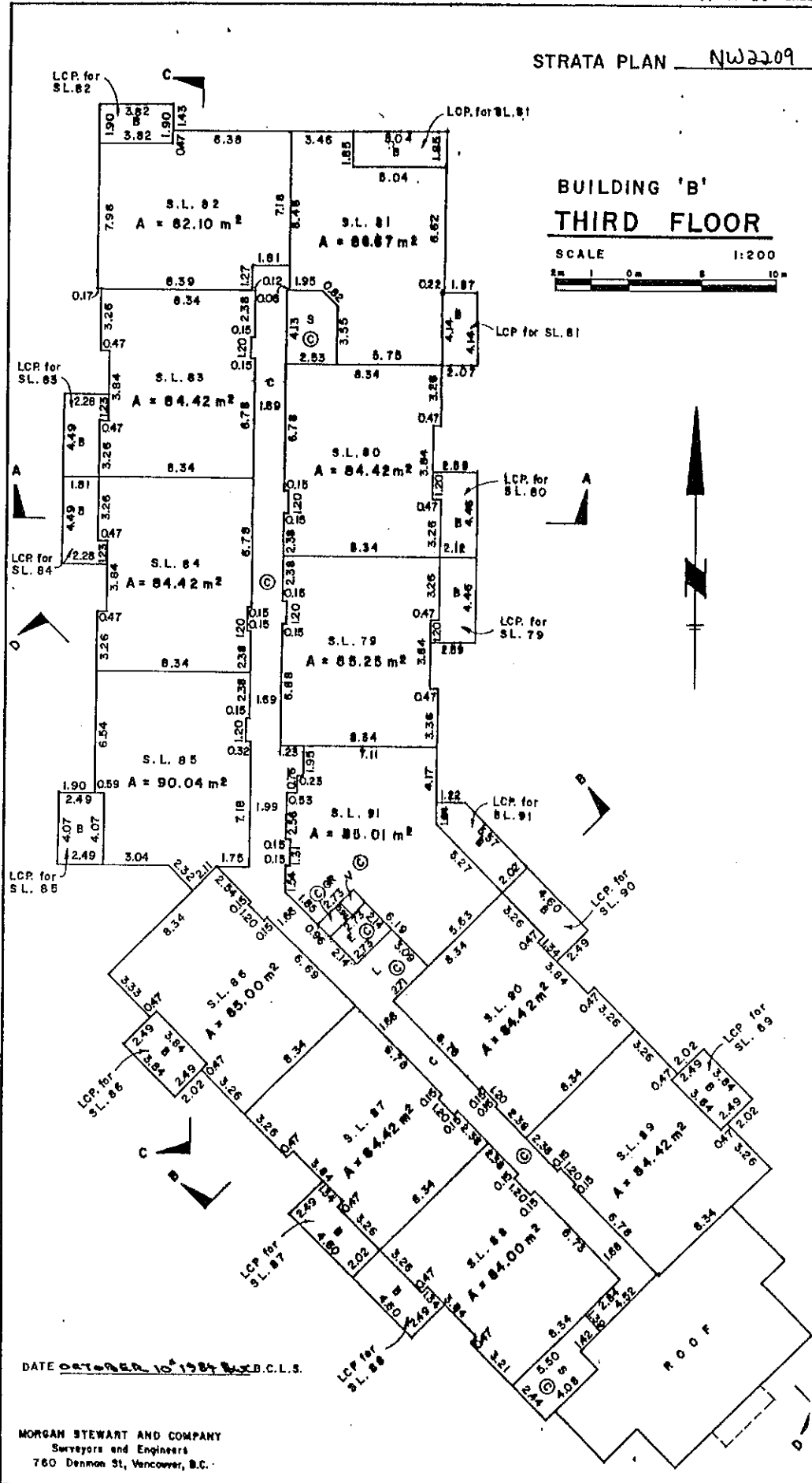
MORGAN STEWART AND COMPANY  
Surveyors and Engineers  
760 Denman St, Vancouver, B.C.



STRATA PLAN NW2209

**BUILDING 'B'**  
**THIRD FLOOR**

SCALE 1:200  
0m 5m 10m

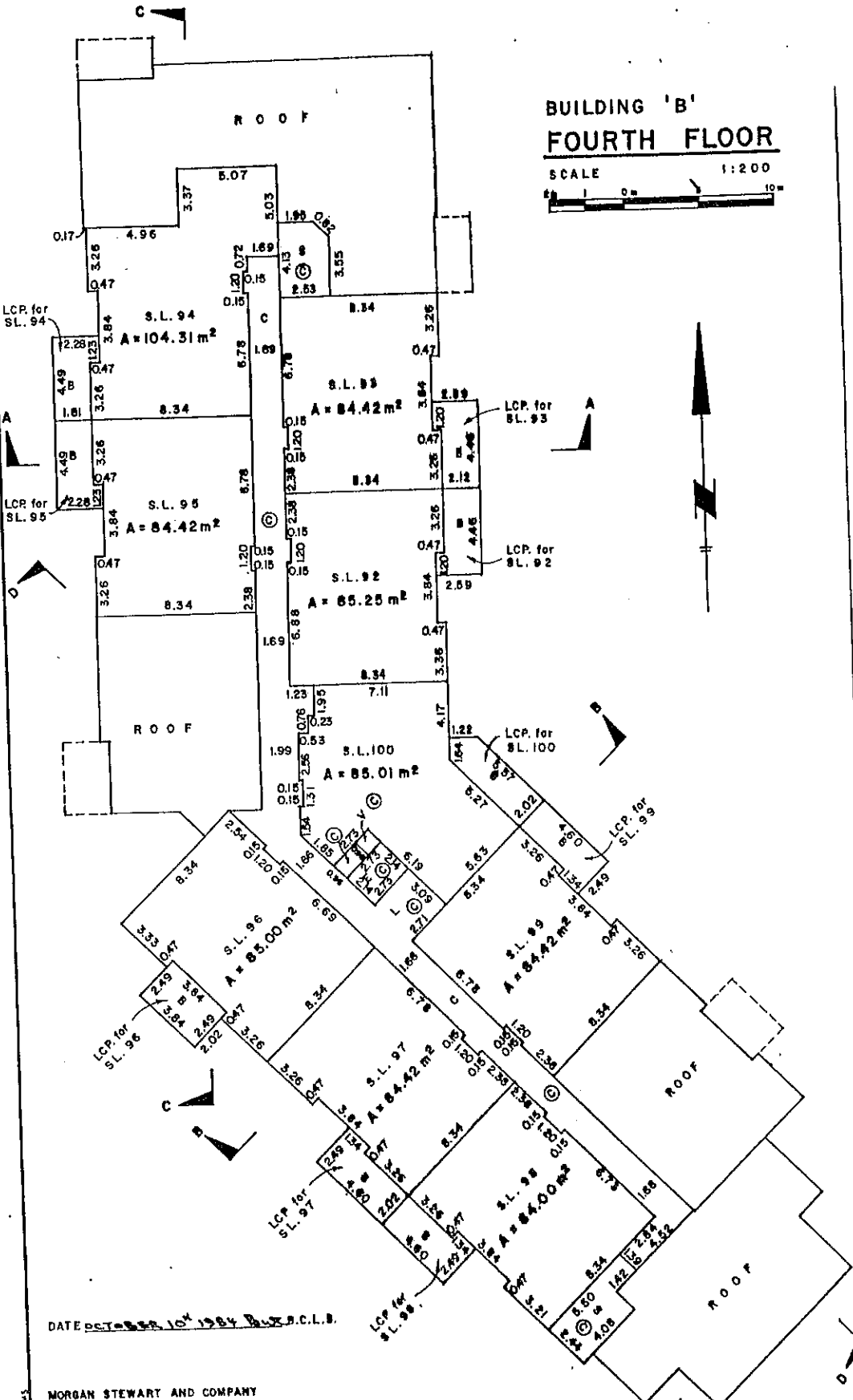


DATE OCTOBER 10 1984 B.S.C.L.S.

MORGAN STEWART AND COMPANY  
Surveyors and Engineers  
760 Denman St, Vancouver, B.C.

STRATA PLAN NW 2209

**BUILDING 'B'**  
**FOURTH FLOOR**



DATE DEC 10 1984 B.S.C.L.S.

MORGAN STEWART AND COMPANY  
Surveyors and Engineers  
760 Denman St., Vancouver, B.C.



